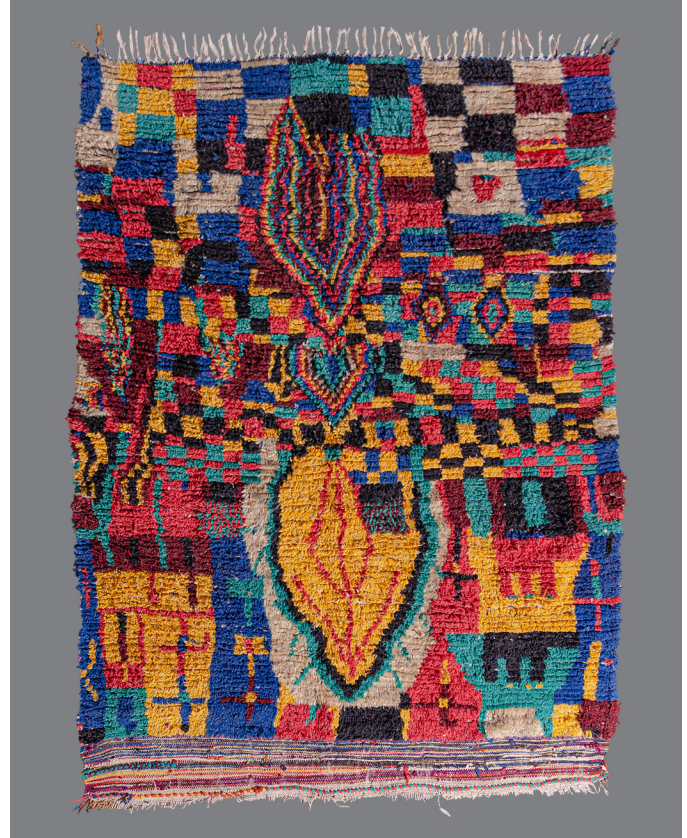


 BREUCKELEN  
BERBER



---

<u>item no.</u>	AZ88
<u>tribe.</u>	Azilal
<u>region.</u>	High Atlas Mountains, Morocco
<u>circa.</u>	1980's
<u>dimensions.</u>	5'6" x 4'6" / 1.68m x 1.37m
<u>pile height.</u>	Low
<u>fringe length.</u>	4"
<u>condition.</u>	Very Good

---

**A dynamic smaller format Azilal woven with a painterly hand in a playful palette. Distorted lozenges float over an abstracted field of checker and cross motifs, creating a loosely organized composition with a fluid sense of movement. Knotted in vibrant red, yellow, electric blue, turquoise, coral, burgundy, charcoal, and ivory. Constructed with a combination of wool and cotton pile on a cotton warp.**